



**PARAMOUNT**  
FORT LAUDERDALE BEACH

**Townhouse 1**  
3 Bed / 4.5 Bath

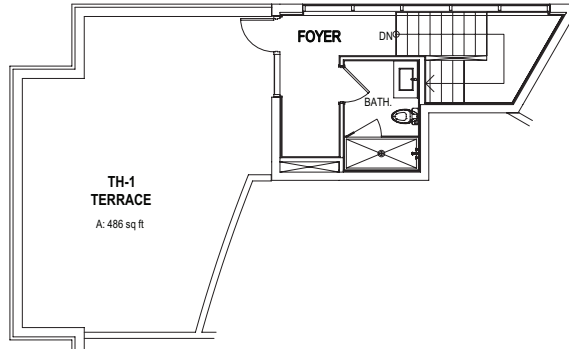
Total Interior Area 2,429 sq. ft.  
Total Terrace Area 756 sq. ft.

Total Area 3,185 sq. ft.

Third Level

Interior Area 141 sq. ft.  
Terrace Area 486 sq. ft.

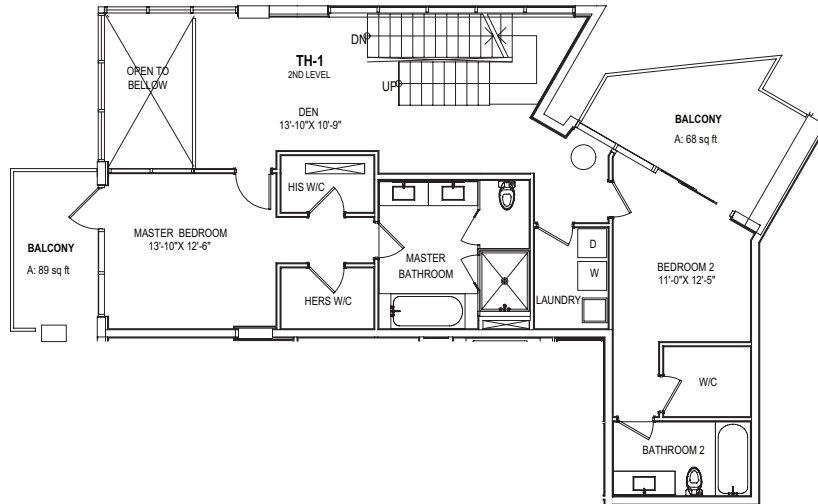
Area 627 sq. ft.



Second Level

Interior Area 1,127 sq. ft.  
Terrace Area 157 sq. ft.

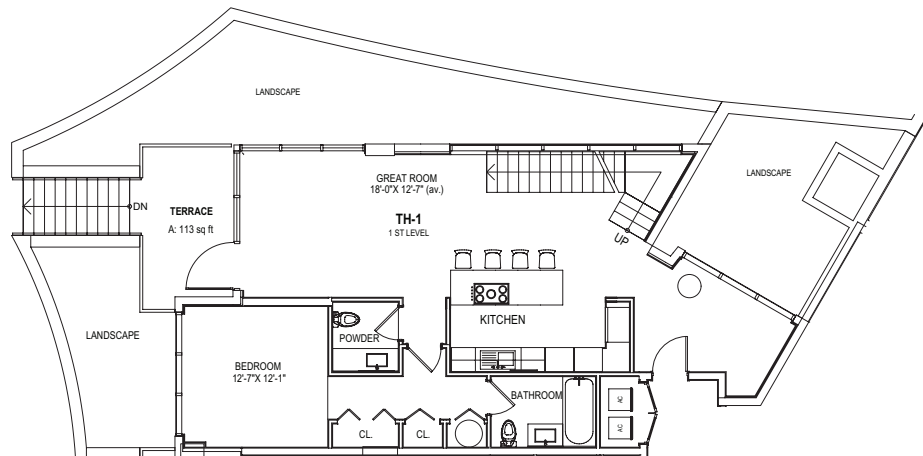
Area 1,284 sq. ft.



First Level

Interior Area 1,161 sq. ft.  
Terrace Area 113 sq. ft.

Area 1,274 sq. ft.



These drawings are conceptual only and are for the convenience of reference. They should not be relied upon as representations, express or implied, of the final detail of the residences. Units shown are examples of unit types and may not depict actual units. Stated square footages are ranges for a particular unit type and are measured to the exterior boundaries of the exterior walls and the centerline of interior demising walls and in fact vary from the area that would be determined by using the description and definition of the "Unit" set forth in the Declaration (which generally only includes the interior airspace between the perimeter walls and excludes interior structural components).



**PARAMOUNT**  
FORT LAUDERDALE BEACH

Townhouse 4  
3 Bed / 4.5 Bath

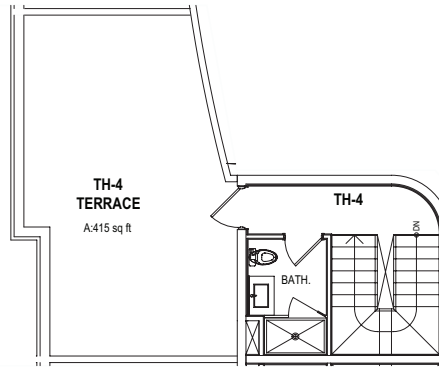
Total Interior Area 2,262 sq. ft.  
Total Terrace Area 620 sq. ft.

Total Area 2,882 sq. ft.

Third Level

Interior Area 143 sq. ft.  
Terrace Area 415 sq. ft.

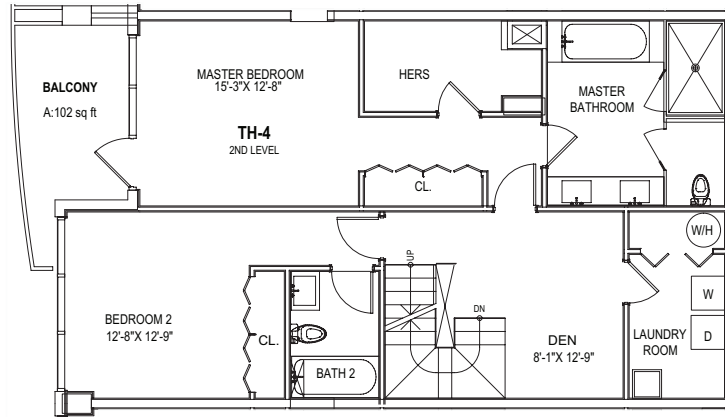
Area 558 sq. ft.



Second Level

Interior Area 1,107 sq. ft.  
Terrace Area 102 sq. ft.

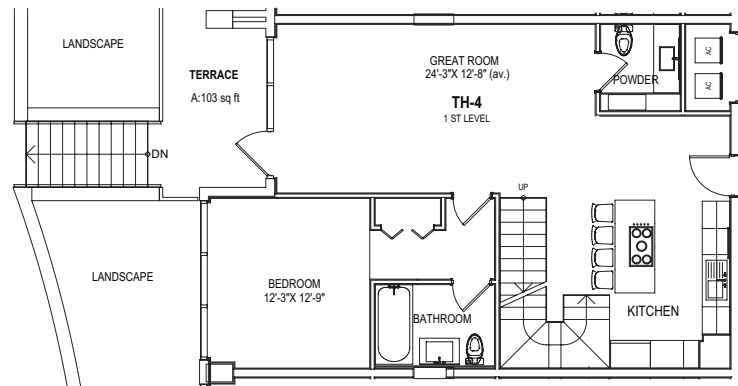
Area 1,209 sq. ft.



First Level

Interior Area 1,012 sq. ft.  
Terrace Area 103 sq. ft.

Area 1,115 sq. ft.



These drawings are conceptual only and are for the convenience of reference. They should not be relied upon as representations, express or implied, of the final detail of the residences. Units shown are examples of unit types and may not depict actual units. Stated square footages are ranges for a particular unit type and are measured to the exterior boundaries of the exterior walls and the centerline of interior demising walls and in fact vary from the area that would be determined by using the description and definition of the "Unit" set forth in the Declaration (which generally only includes the interior airspace between the perimeter walls and excludes interior structural components).