



# PARAMOUNT

FORT LAUDERDALE BEACH

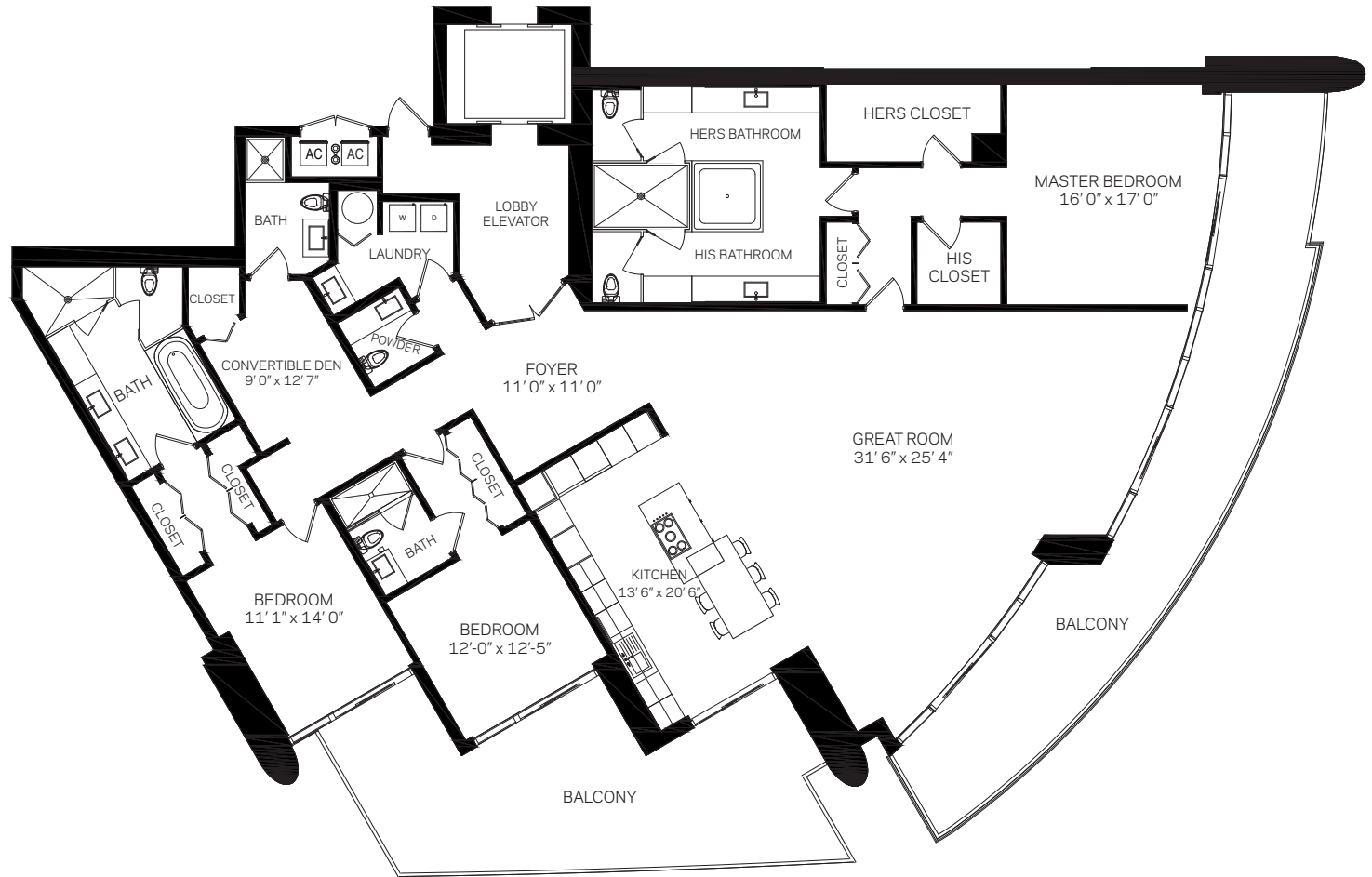
## Residence A1

4 Bed / 4.5 Bath

INTERIOR AREA 3,474 sq. ft. | 323 m<sup>2</sup>

TERRACE AREA 891 sq. ft. | 83 m<sup>2</sup>

TOTAL AREA 4,365 sq. ft. | 406 m<sup>2</sup>



ATLANTIC OCEAN



These drawings are conceptual only and are for the convenience of reference. They should not be relied upon as representations, express or implied, of the final detail of the residences. Units shown are examples of unit types and may not depict actual units. Stated square footages are ranges for a particular unit type and are measured to the exterior boundaries of the exterior walls and the centerline of interior demising walls and in fact vary from the area that would be determined by using the description and definition of the "Unit" set forth in the Declaration (which generally only includes the interior airspace between the perimeter walls and excludes interior structural components).

SALES AND MARKETING BY  
**ONOWORLD**  
PROPERTIES



# PARAMOUNT

FORT LAUDERDALE BEACH

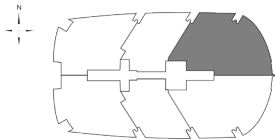
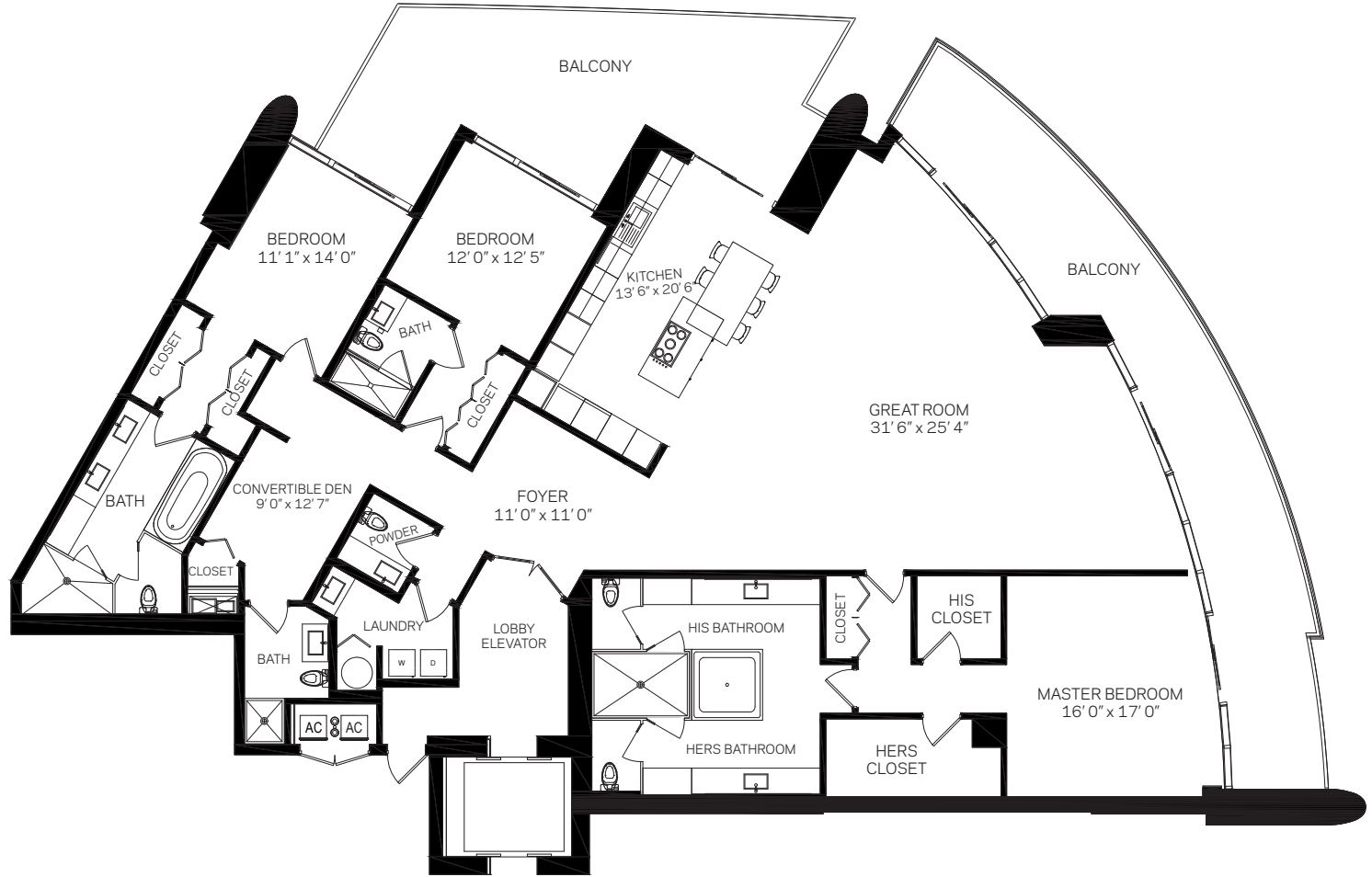
## Residence A2

4 Bed / 4.5 Bath

INTERIOR AREA 3,474 sq. ft. | 323 m<sup>2</sup>

TERRACE AREA 891 sq. ft. | 83 m<sup>2</sup>

TOTAL AREA 4,365 sq. ft. | 406 m<sup>2</sup>



These drawings are conceptual only and are for the convenience of reference. They should not be relied upon as representations, express or implied, of the final detail of the residences. Units shown are examples of unit types and may not depict actual units. Stated square footages are ranges for a particular unit type and are measured to the exterior boundaries of the exterior walls and the centerline of interior demising walls and in fact vary from the area that would be determined by using the description and definition of the "Unit" set forth in the Declaration (which generally only includes the interior airspace between the perimeter walls and excludes interior structural components).

SALES AND MARKETING BY  
**ONEWORLD**  
PROPERTIES



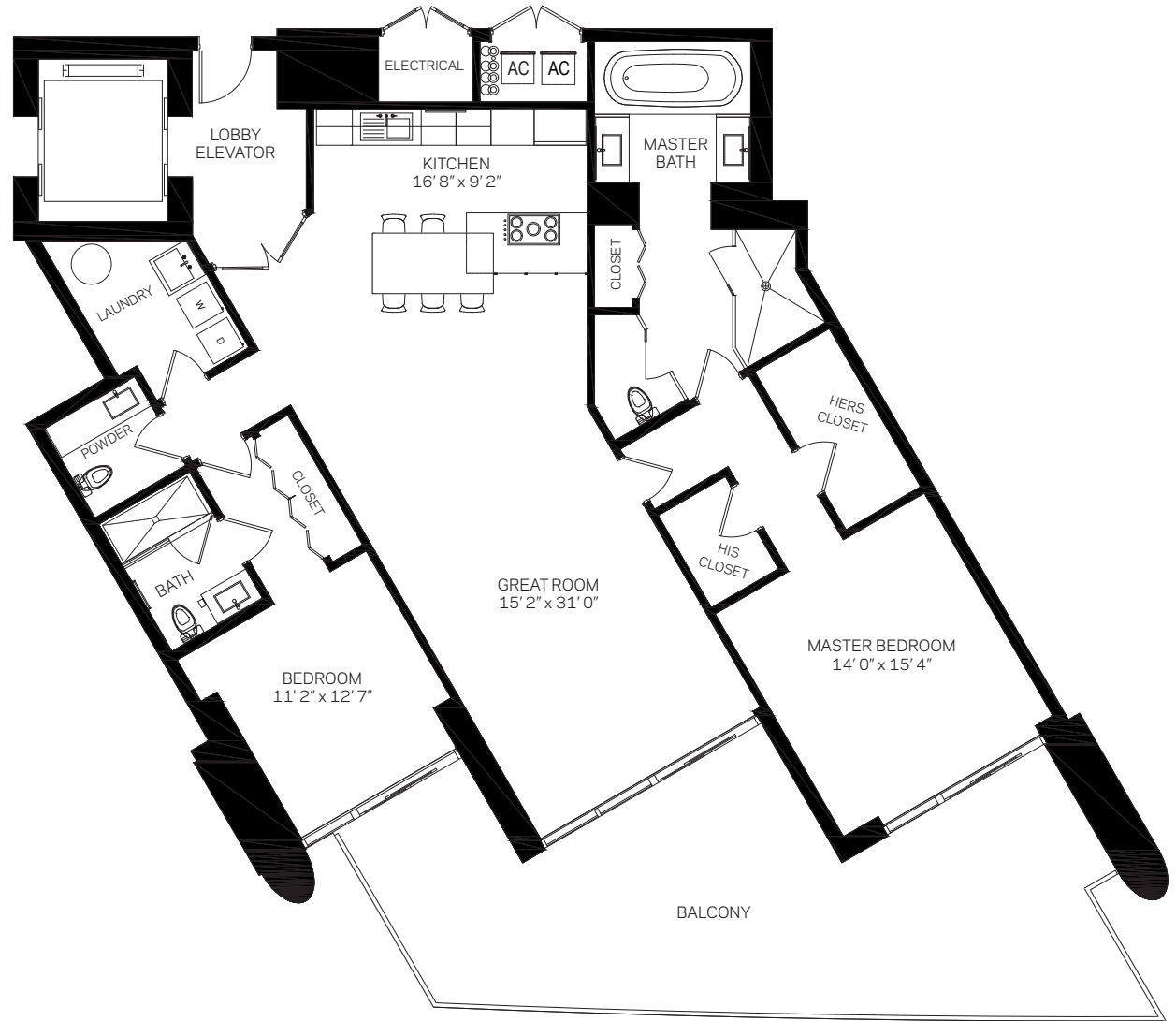
# PARAMOUNT

FORT LAUDERDALE BEACH

## Residence B1

2 Bed / 2.5 Bath

INTERIOR AREA	1,910 sq. ft.   177 m <sup>2</sup>
TERRACE AREA	545 sq. ft.   51 m <sup>2</sup>
<b>TOTAL AREA</b>	<b>2,455 sq. ft.   228 m<sup>2</sup></b>



ATLANTIC OCEAN



These drawings are conceptual only and are for the convenience of reference. They should not be relied upon as representations, express or implied, of the final detail of the residences. Units shown are examples of unit types and may not depict actual units. Stated square footages are ranges for a particular unit type and are measured to the exterior boundaries of the exterior walls and the centerline of interior demising walls and in fact vary from the area that would be determined by using the description and definition of the "Unit" set forth in the Declaration (which generally only includes the interior airspace between the perimeter walls and excludes interior structural components).

SALES AND MARKETING BY  
**ONEWORLD**  
PROPERTIES



# PARAMOUNT

FORT LAUDERDALE BEACH

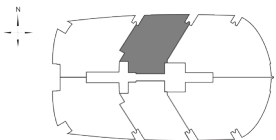
## Residence B2

2 Bed / 2.5 Bath

INTERIOR AREA 1,910 sq. ft. | 177 m<sup>2</sup>

TERRACE AREA 545 sq. ft. | 51 m<sup>2</sup>

TOTAL AREA 2,455 sq. ft. | 228 m<sup>2</sup>



ATLANTIC OCEAN

SALES AND MARKETING BY  
**ONEWORLD**  
PROPERTIES



These drawings are conceptual only and are for the convenience of reference. They should not be relied upon as representations, express or implied, of the final detail of the residences. Units shown are examples of unit types and may not depict actual units. Stated square footages are ranges for a particular unit type and are measured to the exterior boundaries of the exterior walls and the centerline of interior demising walls and in fact vary from the area that would be determined by using the description and definition of the "Unit" set forth in the Declaration (which generally only includes the interior airspace between the perimeter walls and excludes interior structural components).



# PARAMOUNT

FORT LAUDERDALE BEACH

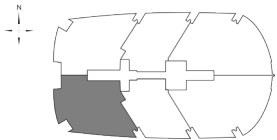
## Residence C1

3 Bed / 3.5 Bath

INTERIOR AREA 2,626 sq. ft. | 244 m<sup>2</sup>

TERRACE AREA 732 sq. ft. | 68 m<sup>2</sup>

TOTAL AREA 3,358 sq. ft. | 312 m<sup>2</sup>



ATLANTIC OCEAN



These drawings are conceptual only and are for the convenience of reference. They should not be relied upon as representations, express or implied, of the final detail of the residences. Units shown are examples of unit types and may not depict actual units. Stated square footages are ranges for a particular unit type and are measured to the exterior boundaries of the exterior walls and the centerline of interior demising walls and in fact vary from the area that would be determined by using the description and definition of the "Unit" set forth in the Declaration (which generally only includes the interior airspace between the perimeter walls and excludes interior structural components).

SALES AND MARKETING BY  
**ONOWORLD**  
PROPERTIES



# PARAMOUNT

FORT LAUDERDALE BEACH

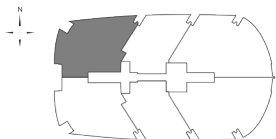
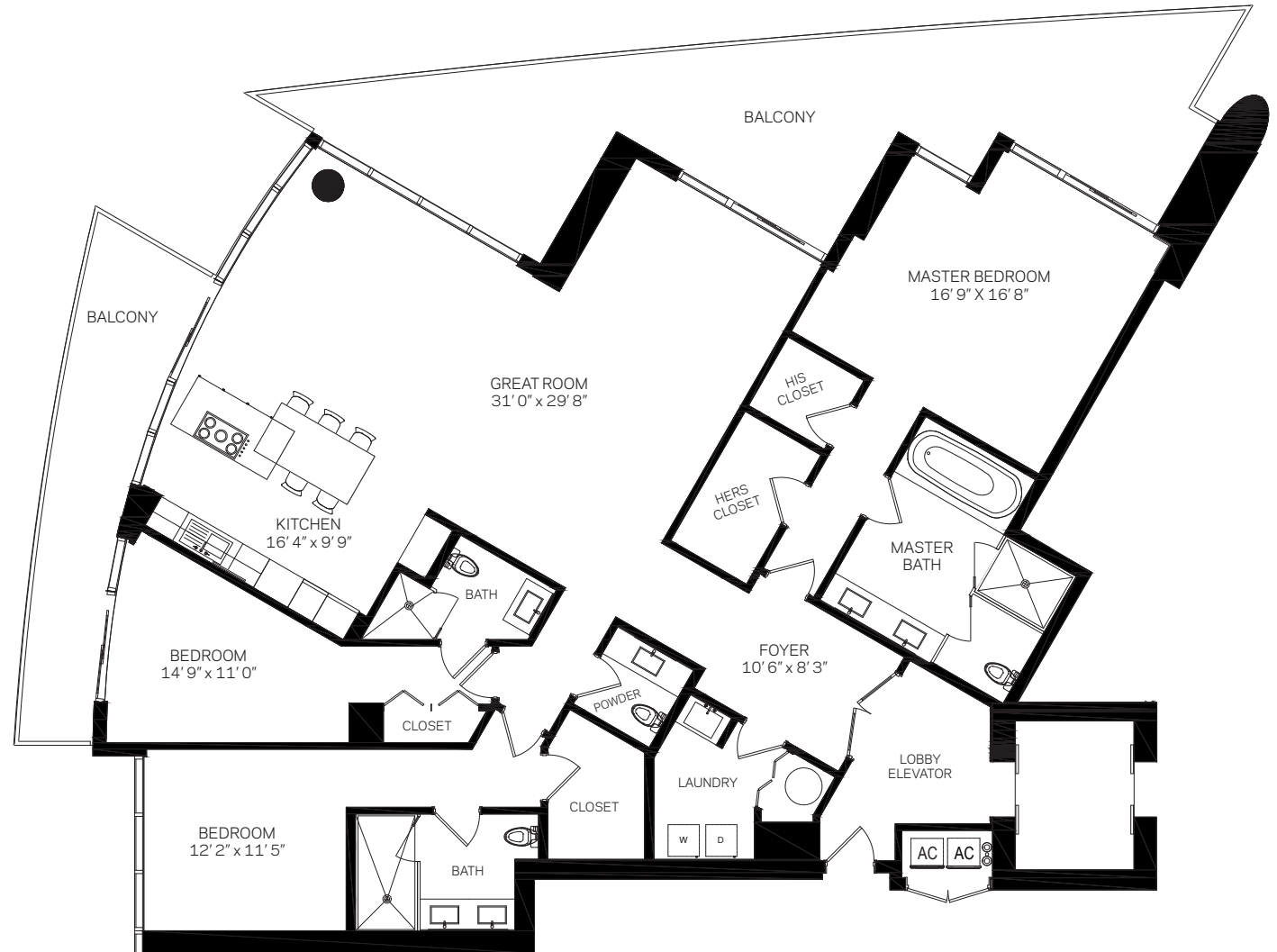
## Residence C2

3 Bed / 3.5 Bath

INTERIOR AREA 2,626 sq. ft. | 244 m<sup>2</sup>

TERRACE AREA 732 sq. ft. | 68 m<sup>2</sup>

TOTAL AREA 3,358 sq. ft. | 312 m<sup>2</sup>



ATLANTIC OCEAN



These drawings are conceptual only and are for the convenience of reference. They should not be relied upon as representations, express or implied, of the final detail of the residences. Units shown are examples of unit types and may not depict actual units. Stated square footages are ranges for a particular unit type and are measured to the exterior boundaries of the exterior walls and the centerline of interior demising walls and in fact vary from the area that would be determined by using the description and definition of the "Unit" set forth in the Declaration (which generally only includes the interior airspace between the perimeter walls and excludes interior structural components).

SALES AND MARKETING BY  
**ONEWORLD**  
PROPERTIES