

THE RESIDENCES
FAENA HOTEL

MIAMI BEACH

3

PENTHOUSE

**“A HOTEL TO REACH FAR BEYOND ALL OTHER
EXPERIENCES POSSIBLE, THE EPITOME
OF MODERN GLAMOUR AND SENSUALITY.”**

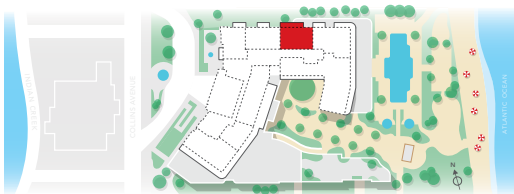
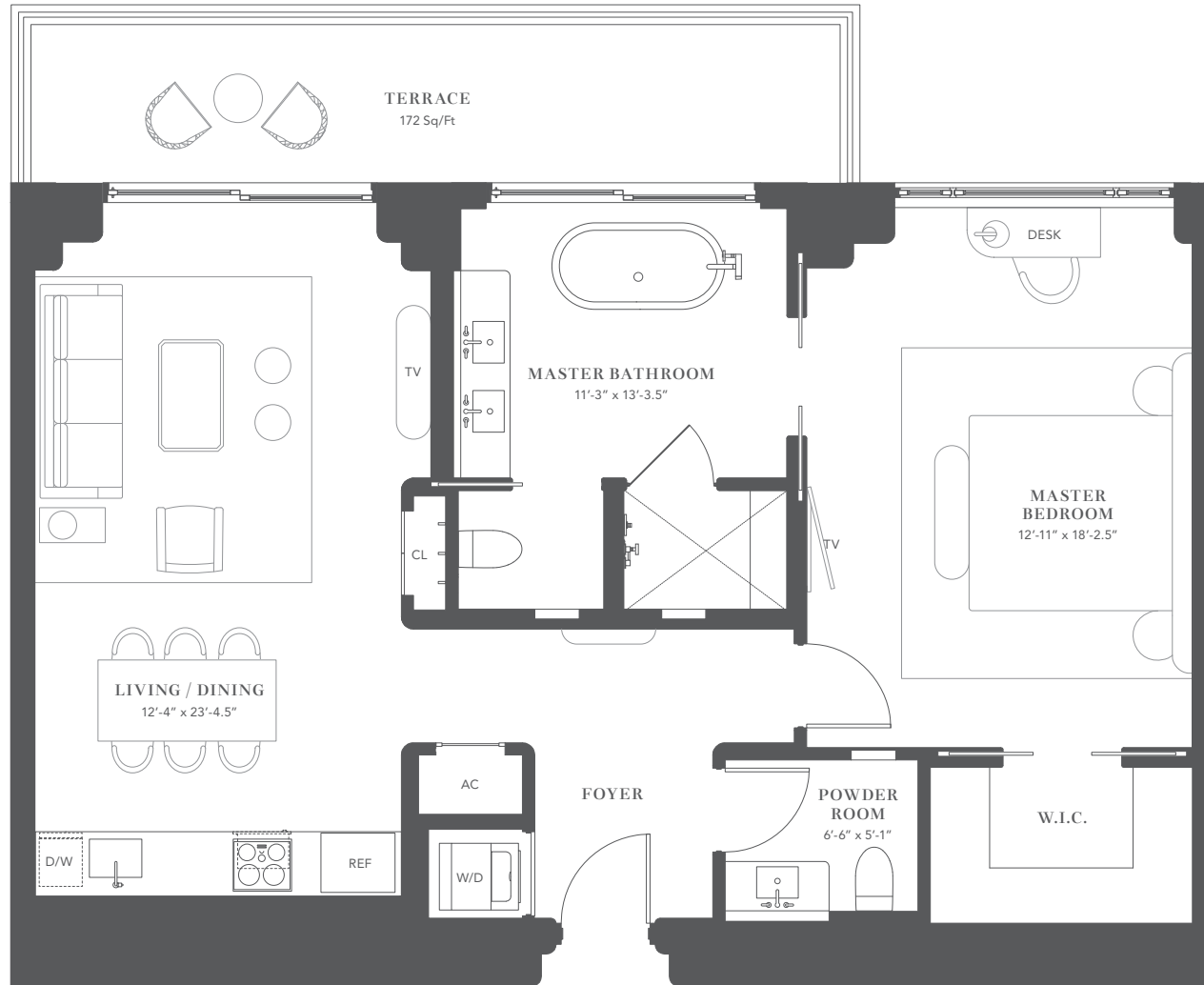
—Baz Luhrmann & Catherine Martin

PENTHOUSE THREE



ONE BEDROOM
ONE BATHROOM
ONE POWDER ROOM

INDOOR: 1,051 Sq/Ft 98 m²
OUTDOOR: 172 Sq/Ft 16 m²
TOTAL LIVING: 1,223 Sq/Ft 114 m²



**THE RESIDENCES AT
FAENA HOTEL MIAMI BEACH**

3201 Collins Avenue, Miami Beach FL 33140

SALES & DESIGN COLLABORATORY

+1 786 646 1238 / www.faena.com



This is not an offer to sell, or solicitation of offers to buy, the condominium units in states where such offer or solicitation cannot be made. This offering is made only by the offering documents for the condominium and no statement should be relied upon if not made in the offering documents. Stated dimensions are measured to the exterior boundaries of the exterior walls and the centerline of interior demising walls and in fact vary from the dimensions that would be determined by using the description and definition of the "Unit" set forth in the Declaration (which generally only includes the interior airspace between the perimeter walls and excludes interior structural components). Note that measurements of rooms set forth on this floor plan are generally taken at the greatest points of each given room (as if the room were a perfect rectangle), without regard for any cutouts. Accordingly, the area of the actual room will typically be smaller than the product obtained by multiplying the stated length times width. All dimensions are approximate and may vary with actual construction, and all floor plans and development plans are subject to change.

THE RESIDENCES
FAENA HOTEL

MIAMI BEACH

5

PENTHOUSE

**“A HOTEL TO REACH FAR BEYOND ALL OTHER
EXPERIENCES POSSIBLE, THE EPITOME
OF MODERN GLAMOUR AND SENSUALITY.”**

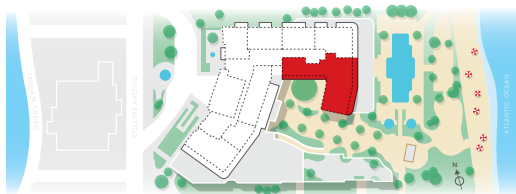
—Baz Luhrmann & Catherine Martin

PENTHOUSE FIVE



THREE BEDROOMS
THREE BATHROOMS
ONE POWDER ROOM

INDOOR: 3,310 Sq/Ft 308 m²
OUTDOOR: 720 Sq/Ft 67 m²
TOTAL LIVING: 4,030 Sq/Ft 374 m²



**THE RESIDENCES AT
FAENA HOTEL MIAMI BEACH**

3201 Collins Avenue, Miami Beach FL 33140

SALES & DESIGN COLLABORATORY

+1 786 646 1238 / www.faena.com



This is not an offer to sell, or solicitation of offers to buy, the condominium units in states where such offer or solicitation cannot be made. This offering is made only by the offering documents for the condominium and no statement should be relied upon if not made in the offering documents. Stated dimensions are measured to the exterior boundaries of the exterior walls and the centerline of interior demising walls and in fact vary from the dimensions that would be determined by using the description and definition of the "Unit" set forth in the Declaration (which generally only includes the interior airspace between the perimeter walls and excludes interior structural components). Note that measurements of rooms set forth on this floor plan are generally taken at the greatest points of each given room (as if the room were a perfect rectangle), without regard for any cutouts. Accordingly, the area of the actual room will typically be smaller than the product obtained by multiplying the stated length times width. All dimensions are approximate and may vary with actual construction, and all floor plans and development plans are subject to change.

THE RESIDENCES
FAENA HOTEL

MIAMI BEACH

6

PENTHOUSE

**“A HOTEL TO REACH FAR BEYOND ALL OTHER
EXPERIENCES POSSIBLE, THE EPITOME
OF MODERN GLAMOUR AND SENSUALITY.”**

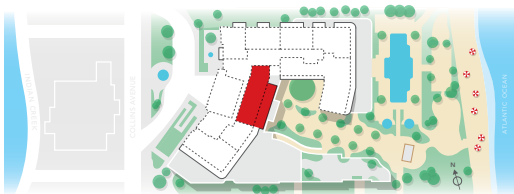
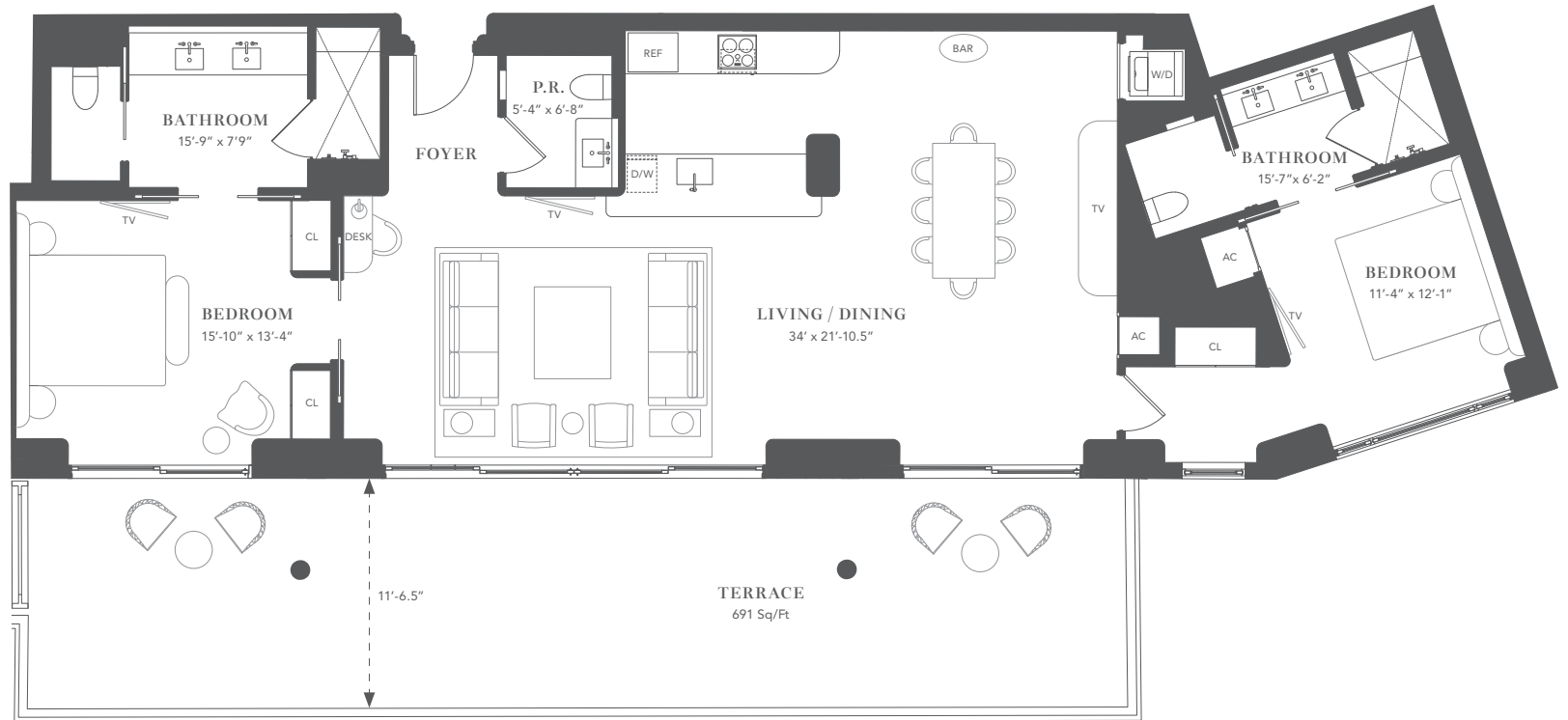
—Baz Luhrmann & Catherine Martin

PENTHOUSE SIX



TWO BEDROOMS
TWO BATHROOMS
ONE POWDER ROOM

INDOOR: 1,730 Sq/Ft 161 m²
OUTDOOR: 691 Sq/Ft 64 m²
TOTAL LIVING: 2,421 Sq/Ft 225 m²



**THE RESIDENCES AT
FAENA HOTEL MIAMI BEACH**

3201 Collins Avenue, Miami Beach FL 33140

SALES & DESIGN COLLABORATORY

+1 786 646 1238 / www.faena.com



This is not an offer to sell, or solicitation of offers to buy, the condominium units in states where such offer or solicitation cannot be made. This offering is made only by the offering documents for the condominium and no statement should be relied upon if not made in the offering documents. Stated dimensions are measured to the exterior boundaries of the exterior walls and the centerline of interior demising walls and in fact vary from the dimensions that would be determined by using the description and definition of the "Unit" set forth in the Declaration (which generally only includes the interior airspace between the perimeter walls and excludes interior structural components). Note that measurements of rooms set forth on this floor plan are generally taken at the greatest points of each given room (as if the room were a perfect rectangle), without regard for any cutouts. Accordingly, the area of the actual room will typically be smaller than the product obtained by multiplying the stated length times width. All dimensions are approximate and may vary with actual construction, and all floor plans and development plans are subject to change.

THE RESIDENCES
FAENA HOTEL

MIAMI BEACH

7

PENTHOUSE

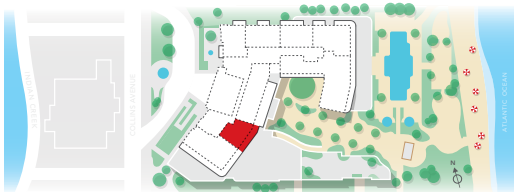
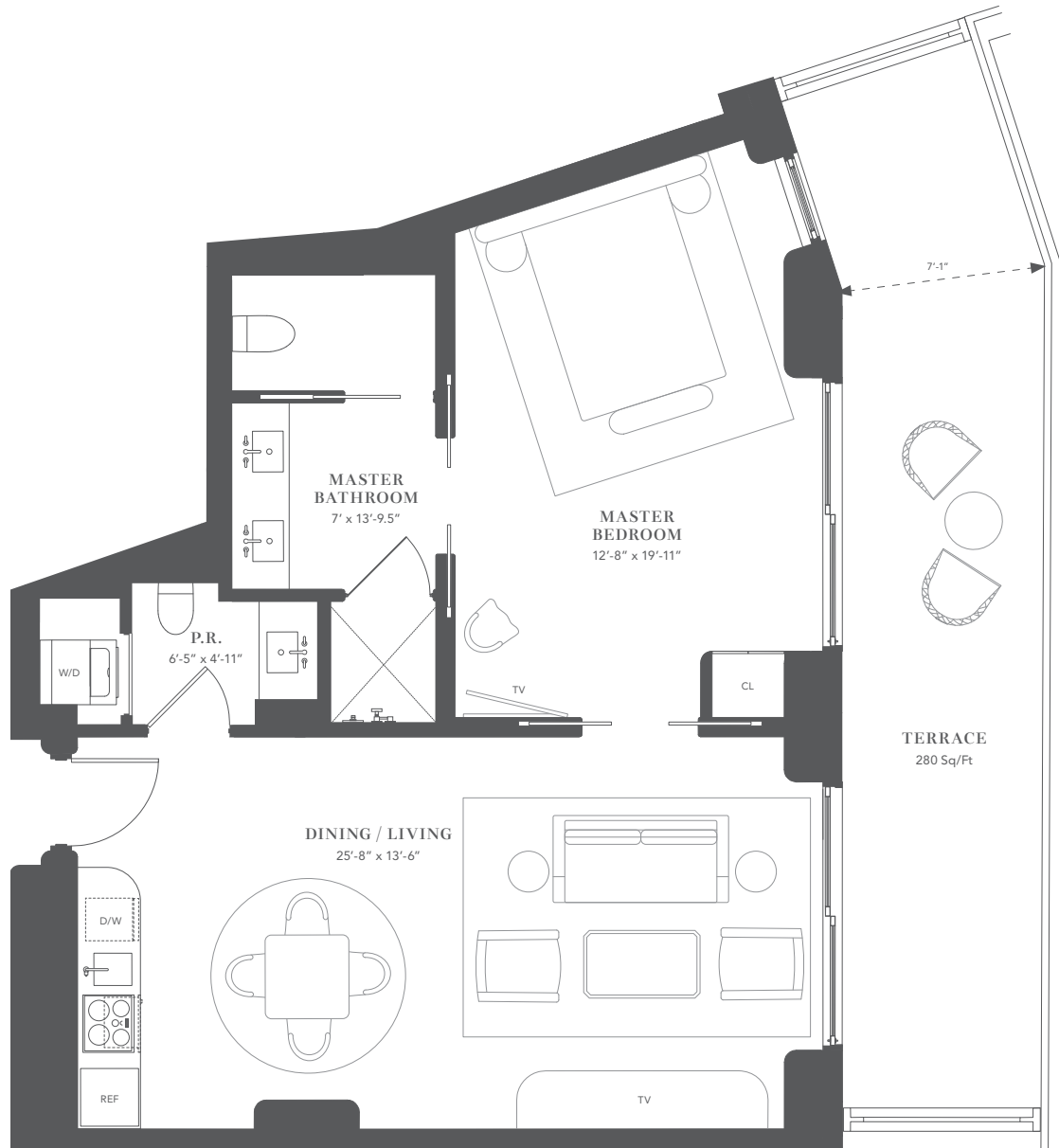
**“A HOTEL TO REACH FAR BEYOND ALL OTHER
EXPERIENCES POSSIBLE, THE EPITOME
OF MODERN GLAMOUR AND SENSUALITY.”**

—Baz Luhrmann & Catherine Martin

PENTHOUSE SEVEN

ONE BEDROOM
 ONE BATHROOM
 ONE POWDER ROOM

INDOOR: 862 Sq/Ft 80 m²
 OUTDOOR: 280 Sq/Ft 26 m²
 TOTAL LIVING: 1,142 Sq/Ft 106 m²



**THE RESIDENCES AT
FAENA HOTEL MIAMI BEACH**

3201 Collins Avenue, Miami Beach FL 33140

SALES & DESIGN COLLABORATORY

+1 786 646 1238 / www.faena.com



This is not an offer to sell, or solicitation of offers to buy, the condominium units in states where such offer or solicitation cannot be made. This offering is made only by the offering documents for the condominium and no statement should be relied upon if not made in the offering documents. Stated dimensions are measured to the exterior boundaries of the exterior walls and the centerline of interior demising walls and in fact vary from the dimensions that would be determined by using the description and definition of the "Unit" set forth in the Declaration (which generally only includes the interior airspace between the perimeter walls and excludes interior structural components). Note that measurements of rooms set forth on this floor plan are generally taken at the greatest points of each given room (as if the room were a perfect rectangle), without regard for any cutouts. Accordingly, the area of the actual room will typically be smaller than the product obtained by multiplying the stated length times width. All dimensions are approximate and may vary with actual construction, and all floor plans and development plans are subject to change.

THE RESIDENCES
FAENA HOTEL

MIAMI BEACH

2

UPPER
PENTHOUSE

**“A HOTEL TO REACH FAR BEYOND ALL OTHER
EXPERIENCES POSSIBLE, THE EPITOME
OF MODERN GLAMOUR AND SENSUALITY.”**

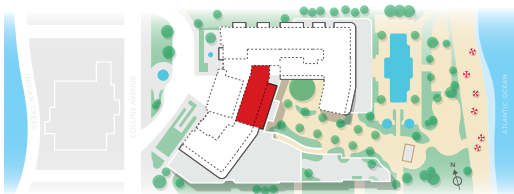
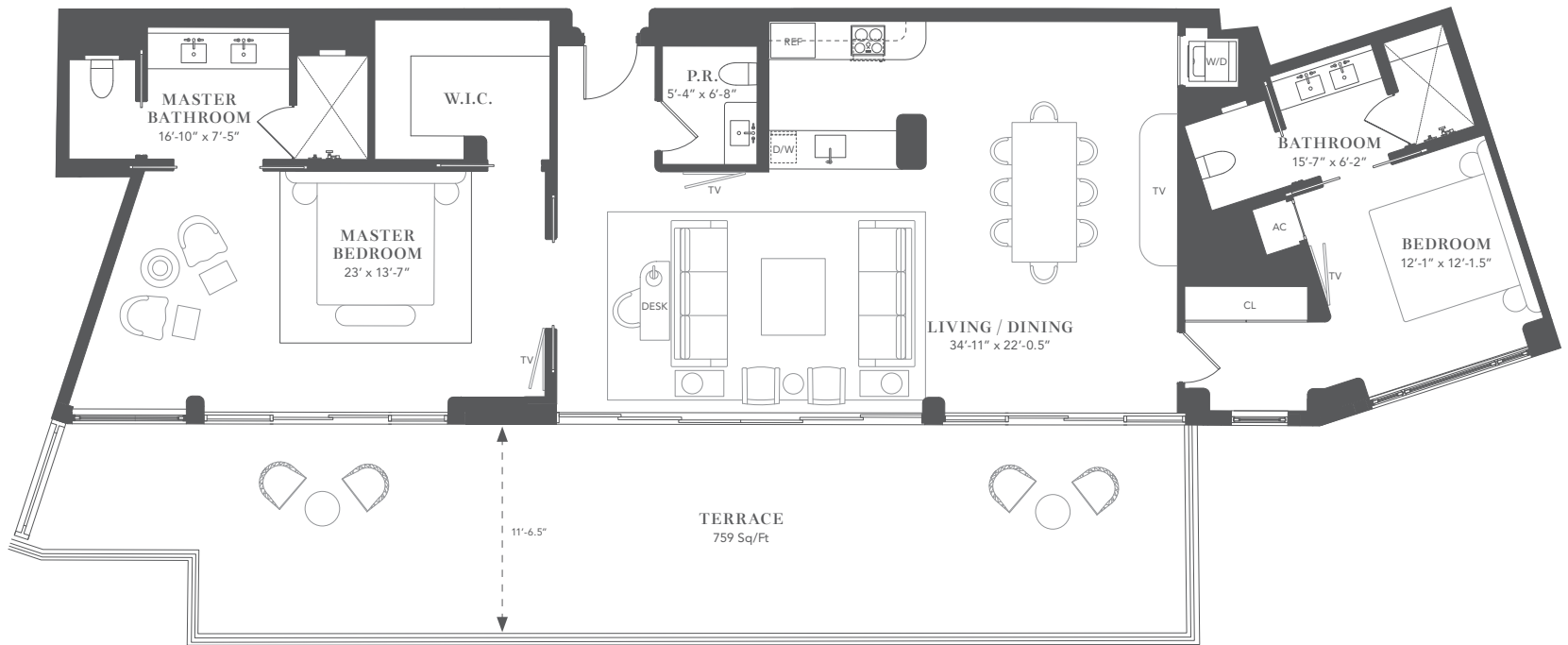
—Baz Luhrmann & Catherine Martin

UPPER PENTHOUSE TWO



TWO BEDROOMS
TWO BATHROOMS
ONE POWDER ROOM

INDOOR: 1,878 Sq/Ft 174 m²
OUTDOOR: 759 Sq/Ft 71 m²
TOTAL LIVING: 2,637 Sq/Ft 245 m²



**THE RESIDENCES AT
FAENA HOTEL MIAMI BEACH**

3201 Collins Avenue, Miami Beach FL 33140

SALES & DESIGN COLLABORATORY

+1 786 646 1238 / www.faena.com



This is not an offer to sell, or solicitation of offers to buy, the condominium units in states where such offer or solicitation cannot be made. This offering is made only by the offering documents for the condominium and no statement should be relied upon if not made in the offering documents. Stated dimensions are measured to the exterior boundaries of the exterior walls and the centerline of interior demising walls and in fact vary from the dimensions that would be determined by using the description and definition of the "Unit" set forth in the Declaration (which generally only includes the interior airspace between the perimeter walls and excludes interior structural components). Note that measurements of rooms set forth on this floor plan are generally taken at the greatest points of each given room (as if the room were a perfect rectangle), without regard for any cutouts. Accordingly, the area of the actual room will typically be smaller than the product obtained by multiplying the stated length times width. All dimensions are approximate and may vary with actual construction, and all floor plans and development plans are subject to change.