

RESIDENCE 1A

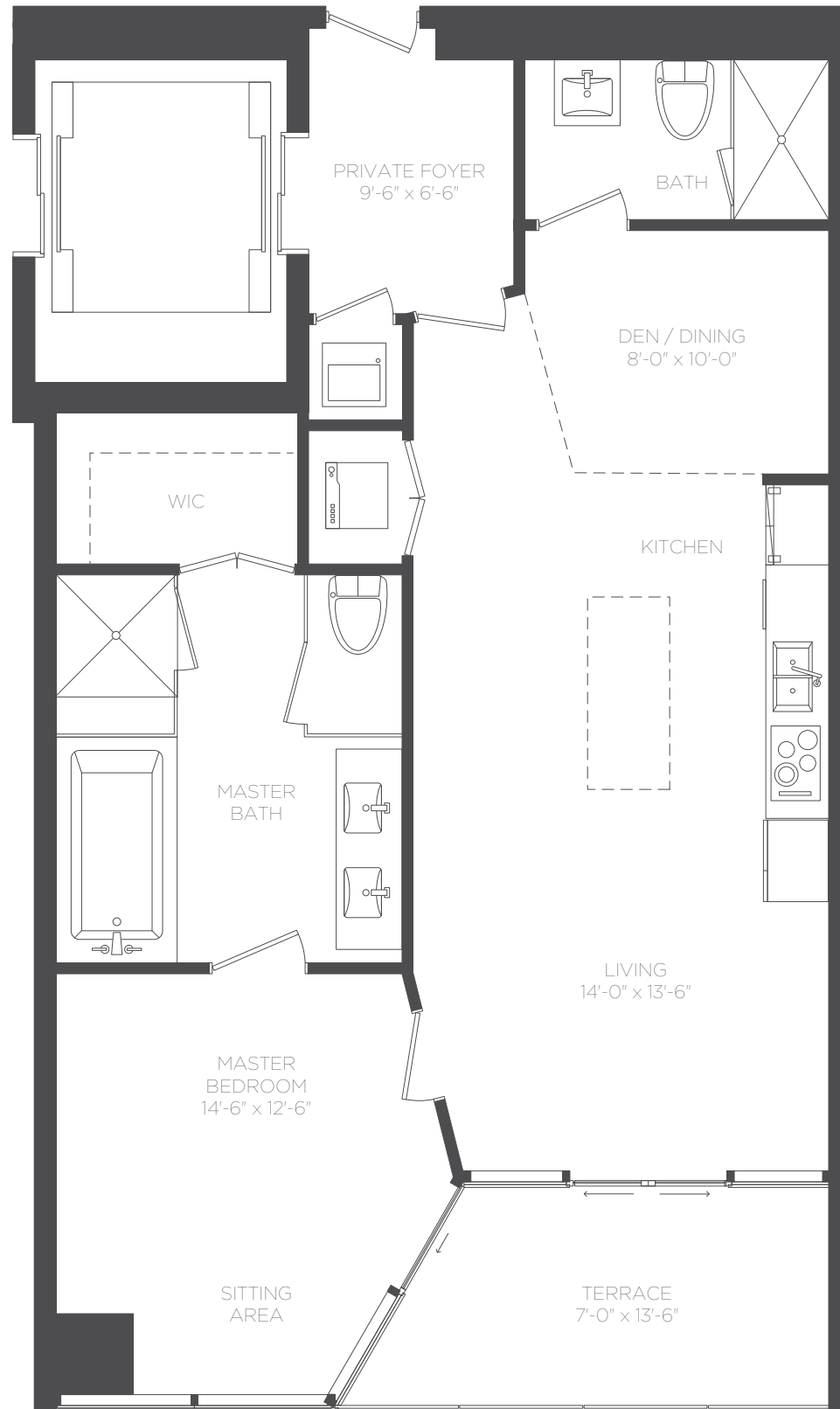
1 BEDROOM + DEN / 2 BATHS

FLOORS 7 - 46

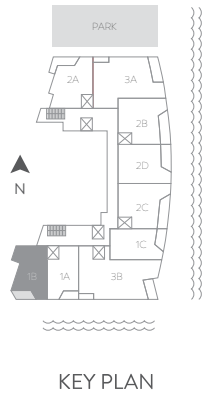
AC 885 SF / 82.22 m²

TERRACE 95 SF / 8.83 m²

TOTAL 980 SF / 91.05 m²



Stated Square Footages And Dimensions Are Measured To The Exterior Boundaries Of The Exterior Walls And The Centerline Of Interior Demising Walls And In Fact Vary From The Dimensions That Would Be Determined By Using The Description And Definition Of The "Unit" Set Forth In The Declaration (Which Generally Only Includes The Interior Airspace Between The Perimeter Walls And Excludes All Interior Structural Components And Other Common Elements). This Method Is Generally Used In Sales Materials And Is Provided To Allow A Prospective Buyer To Compare The Units With Units In Other Condominium Projects That Utilize The Same Method. For Your Reference, The Area Of The Unit, Determined In Accordance With These Defined Unit Boundaries, Is Set Forth Above And Is Labeled As "Ac" (Terraces, Although Included In The Total Square Footage, Are Not Part Of The Unit). Measurements Of Rooms Set Forth On This Floor Plan Are Generally Taken At The Farthest Points Of Each Given Room (As If The Room Were A Perfect Rectangle). Without Regard For Any Cutouts Or Variations. Accordingly, The Area Of The Actual Room Will Typically Be Smaller Than The Product Obtained By Multiplying The Stated Length And Width. All Dimensions Are Estimates Which Will Vary With Actual Construction, And All Floor Plans, Specifications And Other Development Plans Are Proposed And Conceptual Only, Which Are Subject To Change And Will Not Necessarily Accurately Reflect The Final Plans And Specifications For The Development.



RESIDENCE 1B

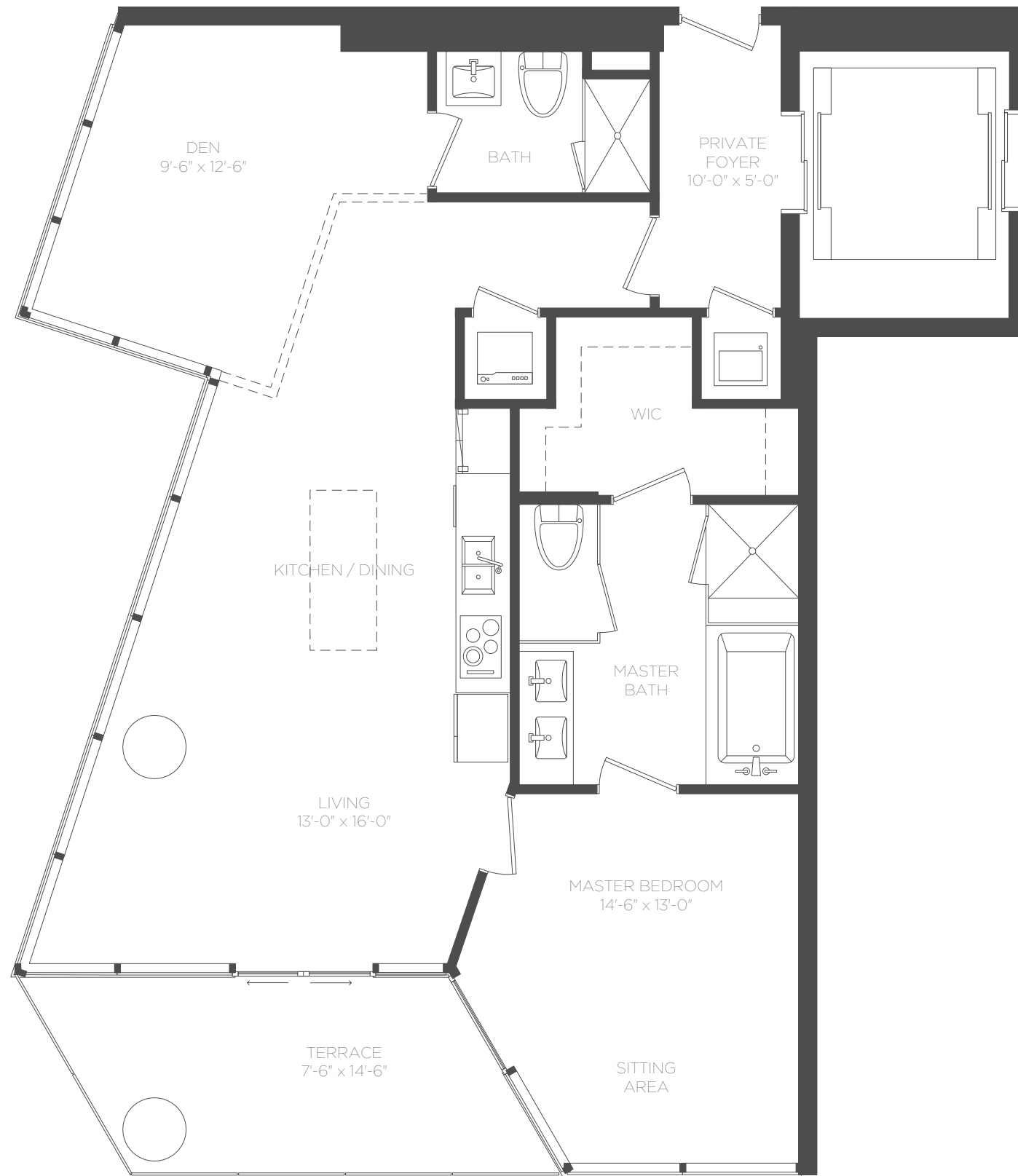
1 BEDROOM + DEN / 2 BATHS

FLOORS 7 - 46

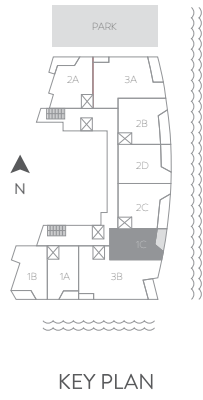
AC 982 SF / 91.23 m²

TERRACE 117 SF / 10.87 m²

TOTAL 1099 SF / 102.10 m²



Stated Square Footages And Dimensions Are Measured To The Exterior Boundaries Of The Exterior Walls And The Centerline Of Interior Demising Walls And In Fact Vary From The Dimensions That Would Be Determined By Using The Description And Definition Of The "Unit" Set Forth In The Declaration (Which Generally Only Includes The Interior Airspace Between The Perimeter Walls And Excludes All Interior Structural Components And Other Common Elements). This Method Is Generally Used In Sales Materials And Is Provided To Allow A Prospective Buyer To Compare The Units With Units In Other Condominium Projects That Utilize The Same Method. For Your Reference, The Area Of The Unit, Determined In Accordance With These Defined Unit Boundaries, Is Set Forth Above And Is Labeled As "Ac" (Terraces, Although Included In The Total Square Footage, Are Not Part Of The Unit). Measurements Of Rooms Set Forth On This Floor Plan Are Generally Taken At The Farthest Points Of Each Given Room (As If The Room Were A Perfect Rectangle). Without Regard For Any Cutouts Or Variations. Accordingly, The Area Of The Actual Room Will Typically Be Smaller Than The Product Obtained By Multiplying The Stated Length And Width. All Dimensions Are Estimates Which Will Vary With Actual Construction, And All Floor Plans, Specifications And Other Development Plans Are Proposed And Conceptual Only, Which Are Subject To Change And Will Not Necessarily Accurately Reflect The Final Plans And Specifications For The Development.



RESIDENCE 1C

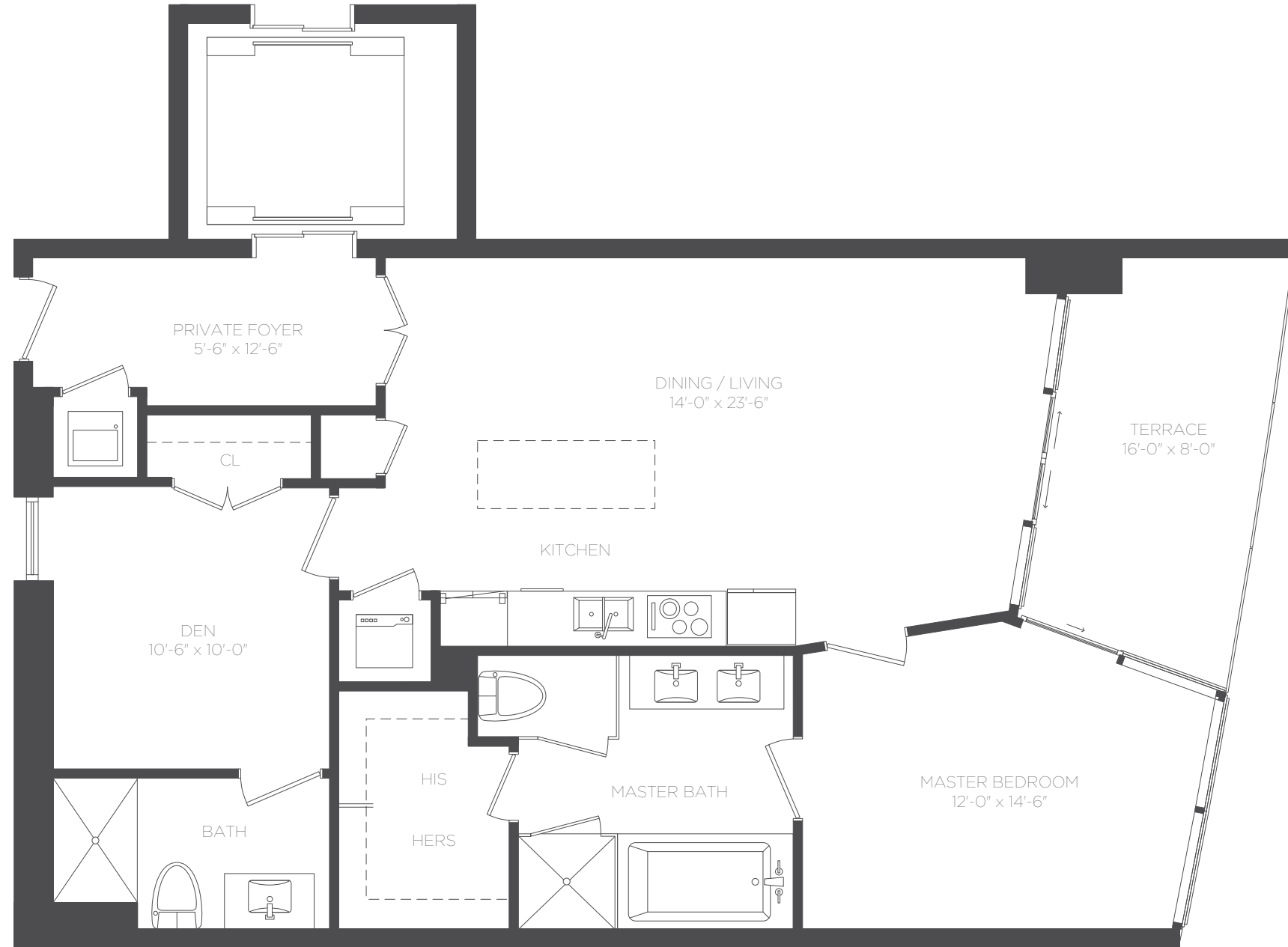
1 BEDROOM + DEN / 2 BATHS

FLOORS 7 - 46

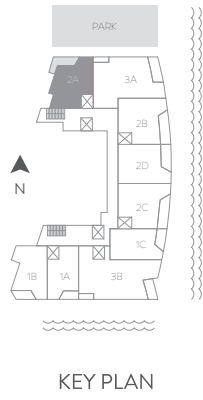
AC 983 SF / 91.32 m²

TERRACE 114 SF / 10.6 m²

TOTAL 1097 SF / 101.92 m²



Stated Square Footages And Dimensions Are Measured To The Exterior Boundaries Of The Exterior Walls And The Centerline Of Interior Demising Walls And In Fact Vary From The Dimensions That Would Be Determined By Using The Description And Definition Of The "Unit" Set Forth In The Declaration (Which Generally Only Includes The Interior Airspace Between The Perimeter Walls And Excludes All Interior Structural Components And Other Common Elements). This Method Is Generally Used In Sales Materials And Is Provided To Allow A Prospective Buyer To Compare The Units With Units In Other Condominium Projects That Utilize The Same Method. For Your Reference, The Area Of The Unit, Determined In Accordance With These Defined Unit Boundaries, Is Set Forth Above And Is Labeled As "Ac" (Terraces, Although Included In The Total Square Footage, Are Not Part Of The Unit). Measurements Of Rooms Set Forth On This Floor Plan Are Generally Taken At The Farthest Points Of Each Given Room (As If The Room Were A Perfect Rectangle). Without Regard For Any Cutouts Or Variations. Accordingly, The Area Of The Actual Room Will Typically Be Smaller Than The Product Obtained By Multiplying The Stated Length And Width. All Dimensions Are Estimates Which Will Vary With Actual Construction, And All Floor Plans, Specifications And Other Development Plans Are Proposed And Conceptual Only, Which Are Subject To Change And Will Not Necessarily Accurately Reflect The Final Plans And Specifications For The Development.



RESIDENCE 2A

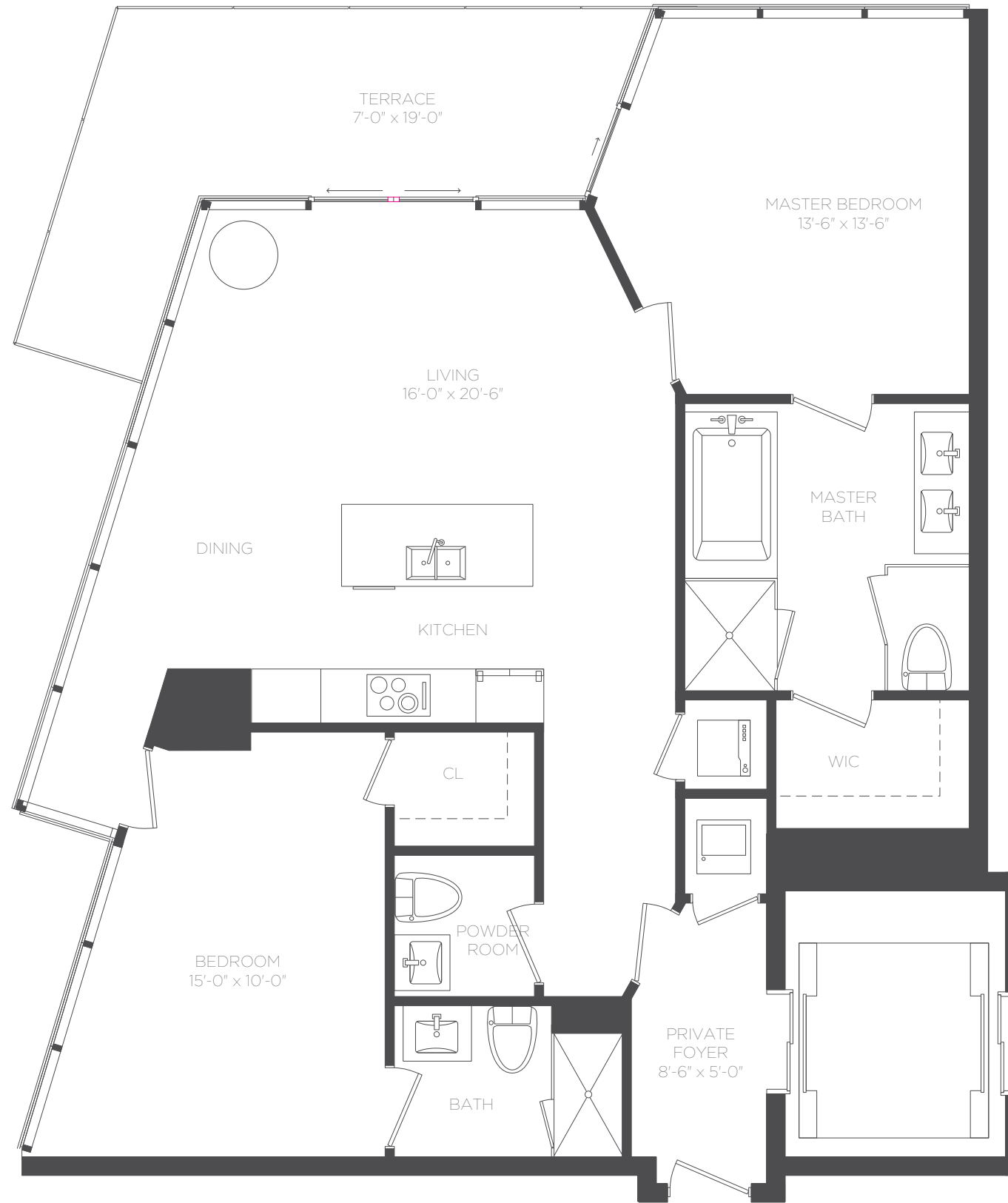
2 BEDROOMS / 2.5 BATHS

FLOORS 6 - 46

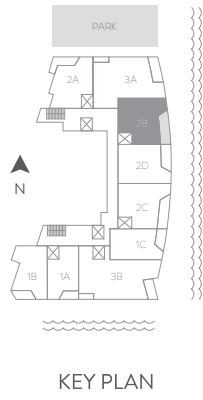
AC 1203 SF / 111.76 m²

TERRACE 168 SF / 15.61 m²

TOTAL 1371 SF / 127.37 m²



Stated Square Footages And Dimensions Are Measured To The Exterior Boundaries Of The Exterior Walls And The Centerline Of Interior Demising Walls And In Fact Vary From The Dimensions That Would Be Determined By Using The Description And Definition Of The "Unit" Set Forth In The Declaration (Which Generally Only Includes The Interior Airspace Between The Perimeter Walls And Excludes All Interior Structural Components And Other Common Elements). This Method Is Generally Used In Sales Materials And Is Provided To Allow A Prospective Buyer To Compare The Units With Units In Other Condominium Projects That Utilize The Same Method. For Your Reference, The Area Of The Unit, Determined In Accordance With These Defined Unit Boundaries, Is Set Forth Above And Is Labeled As "Ac" (Terraces, Although Included In The Total Square Footage, Are Not Part Of The Unit). Measurements Of Rooms Set Forth On This Floor Plan Are Generally Taken At The Farthest Points Of Each Given Room (As If The Room Were A Perfect Rectangle). Without Regard For Any Cutouts Or Variations. Accordingly, The Area Of The Actual Room Will Typically Be Smaller Than The Product Obtained By Multiplying The Stated Length And Width. All Dimensions Are Estimates Which Will Vary With Actual Construction, And All Floor Plans, Specifications And Other Development Plans Are Proposed And Conceptual Only, Which Are Subject To Change And Will Not Necessarily Accurately Reflect The Final Plans And Specifications For The Development.



RESIDENCE 2B

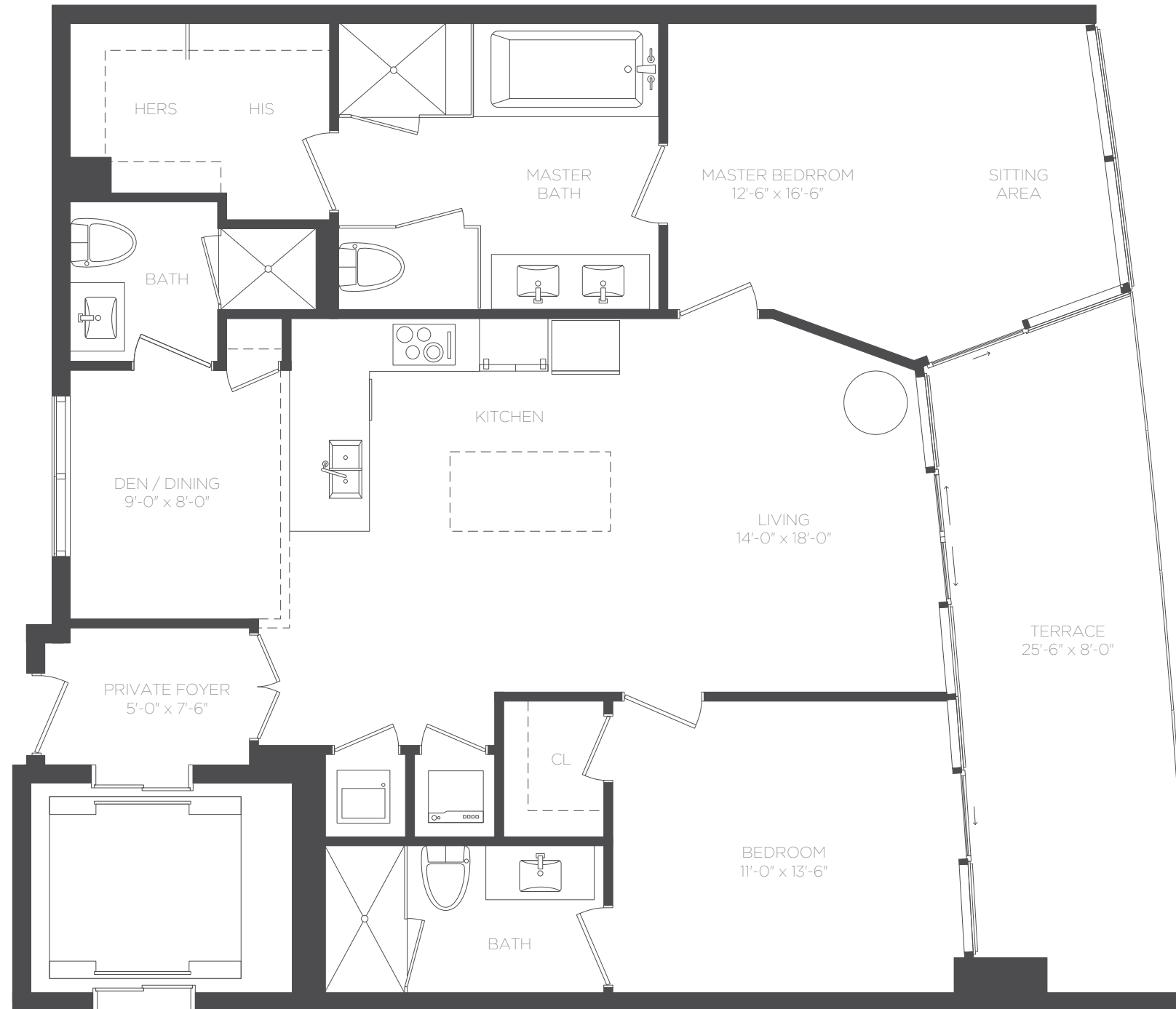
2 BEDROOMS + DEN / 3 BATHS

FLOORS 6 - 46

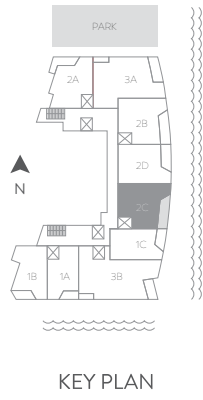
AC 1279 SF / 118.82 m²

TERRACE 196 SF / 18.20 m²

TOTAL 1479 SF / 137.40 m²



Stated Square Footages And Dimensions Are Measured To The Exterior Boundaries Of The Exterior Walls And The Centerline Of Interior Demising Walls And In Fact Vary From The Dimensions That Would Be Determined By Using The Description And Definition Of The "Unit" Set Forth In The Declaration (Which Generally Only Includes The Interior Airspace Between The Perimeter Walls And Excludes All Interior Structural Components And Other Common Elements). This Method Is Generally Used In Sales Materials And Is Provided To Allow A Prospective Buyer To Compare The Units With Units In Other Condominium Projects That Utilize The Same Method. For Your Reference, The Area Of The Unit, Determined In Accordance With These Defined Unit Boundaries, Is Set Forth Above And Is Labeled As "Ac" (Terraces, Although Included In The Total Square Footage, Are Not Part Of The Unit). Measurements Of Rooms Set Forth On This Floor Plan Are Generally Taken At The Farthest Points Of Each Given Room (As If The Room Were A Perfect Rectangle). Without Regard For Any Cutouts Or Variations. Accordingly, The Area Of The Actual Room Will Typically Be Smaller Than The Product Obtained By Multiplying The Stated Length And Width. All Dimensions Are Estimates Which Will Vary With Actual Construction, And All Floor Plans, Specifications And Other Development Plans Are Proposed And Conceptual Only, Which Are Subject To Change And Will Not Necessarily Accurately Reflect The Final Plans And Specifications For The Development.



RESIDENCE 2C

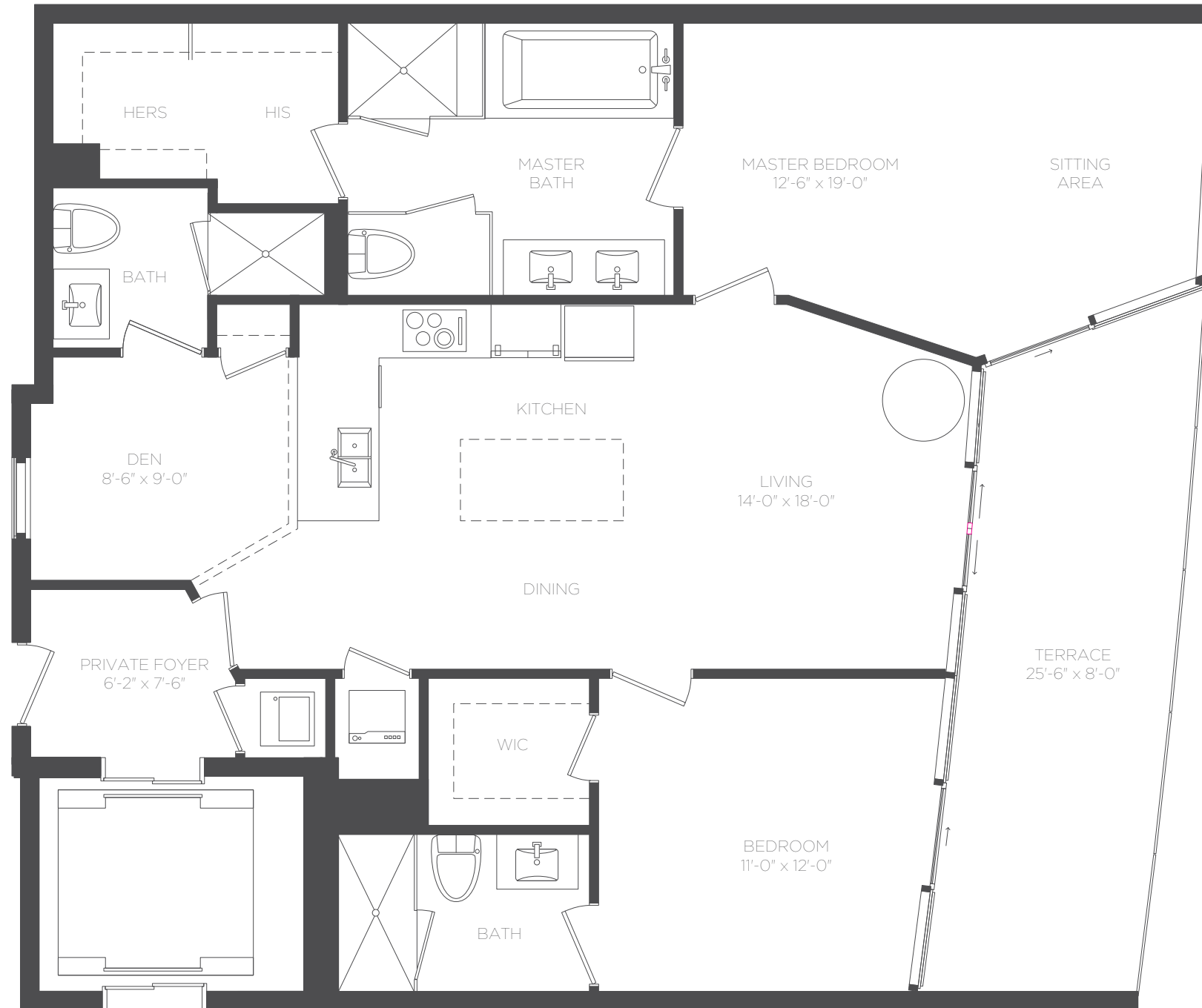
2 BEDROOMS + DEN / 3 BATHS

FLOORS 7 - 46

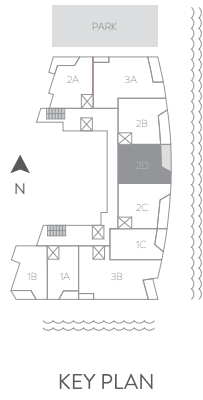
AC 1263 SF / 117.34 m²

TERRACE 197 SF / 18.30 m²

TOTAL 1460 SF / 135.64 m²



Stated Square Footages And Dimensions Are Measured To The Exterior Boundaries Of The Exterior Walls And The Centerline Of Interior Demising Walls And In Fact Vary From The Dimensions That Would Be Determined By Using The Description And Definition Of The "Unit" Set Forth In The Declaration (Which Generally Only Includes The Interior Airspace Between The Perimeter Walls And Excludes All Interior Structural Components And Other Common Elements). This Method Is Generally Used In Sales Materials And Is Provided To Allow A Prospective Buyer To Compare The Units With Units In Other Condominium Projects That Utilize The Same Method. For Your Reference, The Area Of The Unit, Determined In Accordance With These Defined Unit Boundaries, Is Set Forth Above And Is Labeled As "Ac" (Terraces, Although Included In The Total Square Footage, Are Not Part Of The Unit). Measurements Of Rooms Set Forth On This Floor Plan Are Generally Taken At The Farthest Points Of Each Given Room (As If The Room Were A Perfect Rectangle). Without Regard For Any Cutouts Or Variations. Accordingly, The Area Of The Actual Room Will Typically Be Smaller Than The Product Obtained By Multiplying The Stated Length And Width. All Dimensions Are Estimates Which Will Vary With Actual Construction, And All Floor Plans, Specifications And Other Development Plans Are Proposed And Conceptual Only, Which Are Subject To Change And Will Not Necessarily Accurately Reflect The Final Plans And Specifications For The Development.



RESIDENCE 2D

2 BEDROOMS / 2.5 BATHS

FLOORS 6 - 46

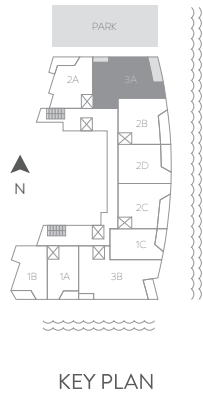
AC 1241 SF / 115.29 m²

TERRACE 161 SF / 14.95 m²

TOTAL 1402 SF / 130.25 m²



Stated Square Footages And Dimensions Are Measured To The Exterior Boundaries Of The Exterior Walls And The Centerline Of Interior Demising Walls And In Fact Vary From The Dimensions That Would Be Determined By Using The Description And Definition Of The "Unit" Set Forth In The Declaration (Which Generally Only Includes The Interior Airspace Between The Perimeter Walls And Excludes All Interior Structural Components And Other Common Elements). This Method Is Generally Used In Sales Materials And Is Provided To Allow A Prospective Buyer To Compare The Units With Units In Other Condominium Projects That Utilize The Same Method. For Your Reference, The Area Of The Unit, Determined In Accordance With These Defined Unit Boundaries, Is Set Forth Above And Is Labeled As "Ac" (Terraces, Although Included In The Total Square Footage, Are Not Part Of The Unit). Measurements Of Rooms Set Forth On This Floor Plan Are Generally Taken At The Farthest Points Of Each Given Room (As If The Room Were A Perfect Rectangle). Without Regard For Any Cutouts Or Variations. Accordingly, The Area Of The Actual Room Will Typically Be Smaller Than The Product Obtained By Multiplying The Stated Length And Width. All Dimensions Are Estimates Which Will Vary With Actual Construction, And All Floor Plans, Specifications And Other Development Plans Are Proposed And Conceptual Only, Which Are Subject To Change And Will Not Necessarily Accurately Reflect The Final Plans And Specifications For The Development.



RESIDENCE 3A

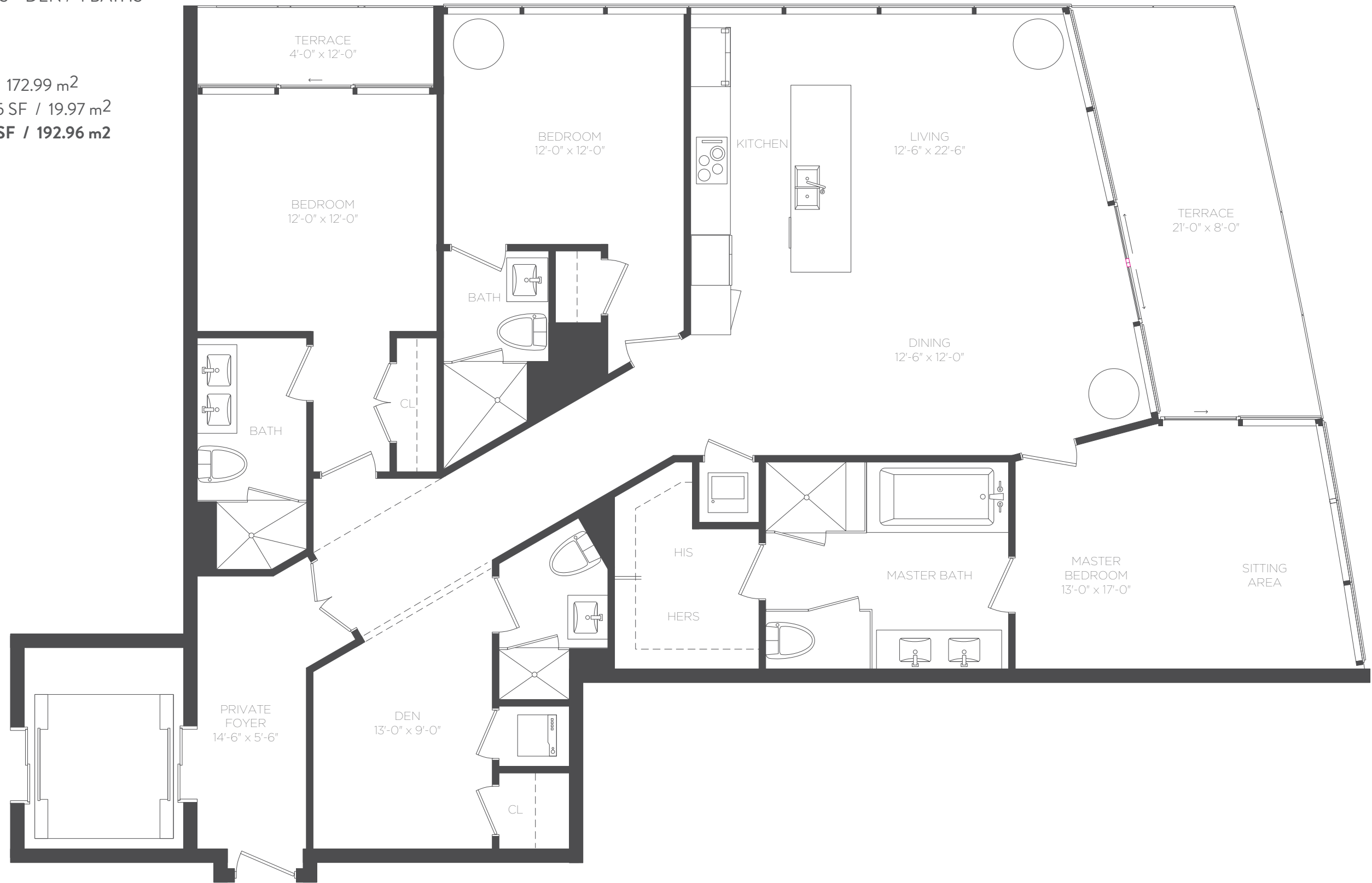
3 BEDROOMS + DEN / 4 BATHS

FLOORS 3 - 46

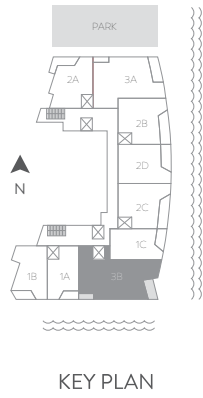
AC 1862 SF / 172.99 m²

TERRACE 215 SF / 19.97 m²

TOTAL 2077 SF / 192.96 m²



Stated Square Footages And Dimensions Are Measured To The Exterior Boundaries Of The Exterior Walls And The Centerline Of Interior Demising Walls And In Fact Vary From The Dimensions That Would Be Determined By Using The Description And Definition Of The "Unit" Set Forth In The Declaration (Which Generally Only Includes The Interior Airspace Between The Perimeter Walls And Excludes All Interior Structural Components And Other Common Elements). This Method Is Generally Used In Sales Materials And Is Provided To Allow A Prospective Buyer To Compare The Units With Units In Other Condominium Projects That Utilize The Same Method. For Your Reference, The Area Of The Unit, Determined In Accordance With These Defined Unit Boundaries, Is Set Forth Above And Is Labeled As "Ac" (Terraces, Although Included In The Total Square Footage, Are Not Part Of The Unit). Measurements Of Rooms Set Forth On This Floor Plan Are Generally Taken At The Farthest Points Of Each Given Room (As If The Room Were A Perfect Rectangle). Without Regard For Any Cutouts Or Variations. Accordingly, The Area Of The Actual Room Will Typically Be Smaller Than The Product Obtained By Multiplying The Stated Length And Width. All Dimensions Are Estimates Which Will Vary With Actual Construction, And All Floor Plans, Specifications And Other Development Plans Are Proposed And Conceptual Only, Which Are Subject To Change And Will Not Necessarily Accurately Reflect The Final Plans And Specifications For The Development.



RESIDENCE 3B

3 BEDROOMS + DEN / 4 BATHS

FLOORS 7 - 46

AC 2103 SF / 195.38 m²
 TERRACE 187 SF / 17.37 m²
TOTAL 2290 SF / 212.75 m²



Stated Square Footages And Dimensions Are Measured To The Exterior Boundaries Of The Exterior Walls And The Centerline Of Interior Demising Walls And In Fact Vary From The Dimensions That Would Be Determined By Using The Description And Definition Of The "Unit" Set Forth In The Declaration (Which Generally Only Includes The Interior Airspace Between The Perimeter Walls And Excludes All Interior Structural Components And Other Common Elements). This Method Is Generally Used In Sales Materials And Is Provided To Allow A Prospective Buyer To Compare The Units With Units In Other Condominium Projects That Utilize The Same Method. For Your Reference, The Area Of The Unit, Determined In Accordance With These Defined Unit Boundaries, Is Set Forth Above And Is Labeled As "Ac" (Terraces, Although Included In The Total Square Footage, Are Not Part Of The Unit). Measurements Of Rooms Set Forth On This Floor Plan Are Generally Taken At The Farthest Points Of Each Given Room (As If The Room Were A Perfect Rectangle). Without Regard For Any Cutouts Or Variations. Accordingly, The Area Of The Actual Room Will Typically Be Smaller Than The Product Obtained By Multiplying The Stated Length And Width. All Dimensions Are Estimates Which Will Vary With Actual Construction, And All Floor Plans, Specifications And Other Development Plans Are Proposed And Conceptual Only, Which Are Subject To Change And Will Not Necessarily Accurately Reflect The Final Plans And Specifications For The Development.